



Empowered lives.  
Resilient nations.

# UN JOINT PROGRAM TO SUPPORT THE PUBLIC AUTHORITY OF MANPOWER

## ISIC Rev.4 Implementation Project

Implementation Plan for PAM including detailed procedures on adoption of Classification



by Ahmad AlMohammad

June 18<sup>th</sup>, 2017

# Table of Contents

1

Develop and Execute ISIC Rev.4 Implementation Plan

2

Current Process to register a company in reference to Economic Activities Classification

3

New Process to register a company after adopting ISIC Rev.4 Classification

4

New Process to add new Classification entry to PAM Classifications Tables

5

Define Standard Data Structure for ISIC Rev.4 Implementation

6

Develop System-level Implementation Plan to adopt ISIC Rev.4 Classification

7

Establish Central Repository for all classifications on the national level

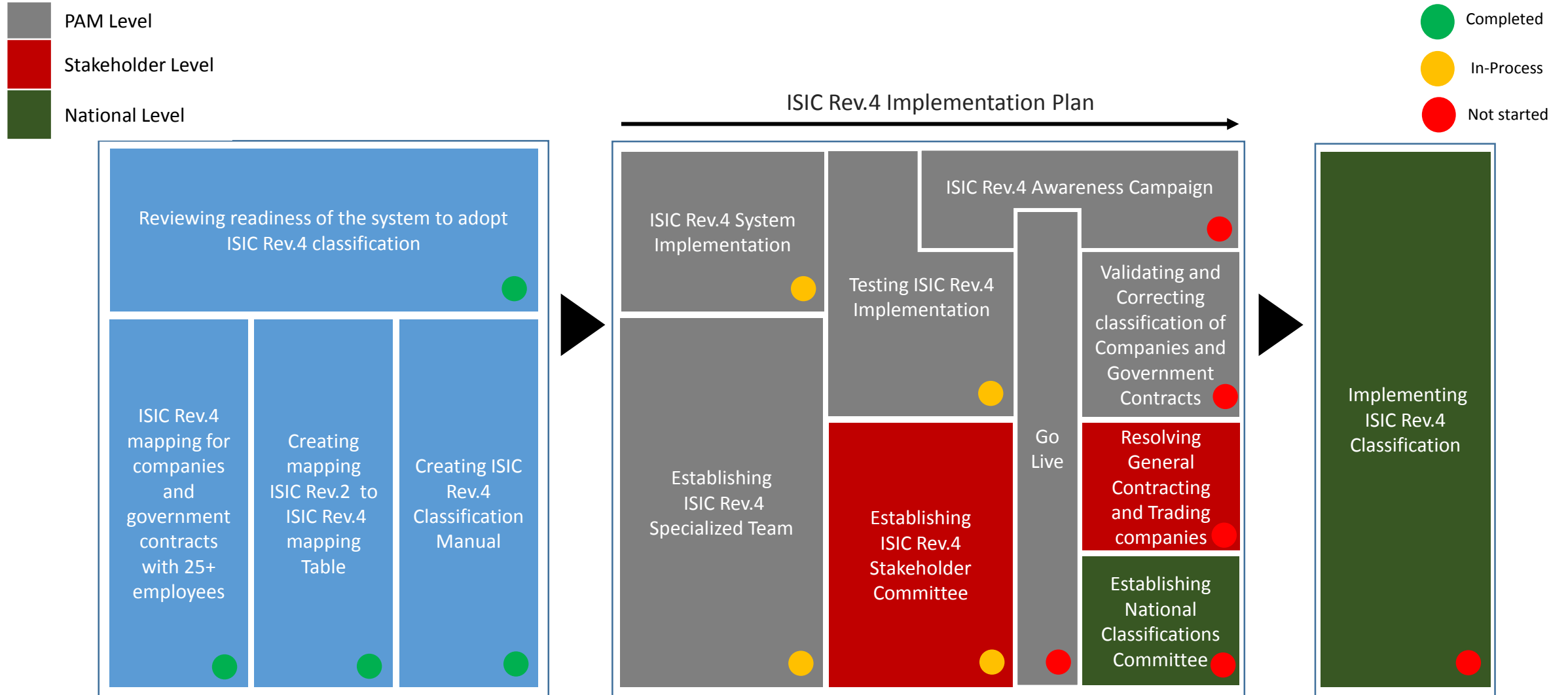
8

New Process to add new Classification entry to the Classifications Central repository

# Develop and Execute ISIC Rev.4 Implementation Plan

by defining the role and responsibility of each ISIC Rev.4 implementing party

1



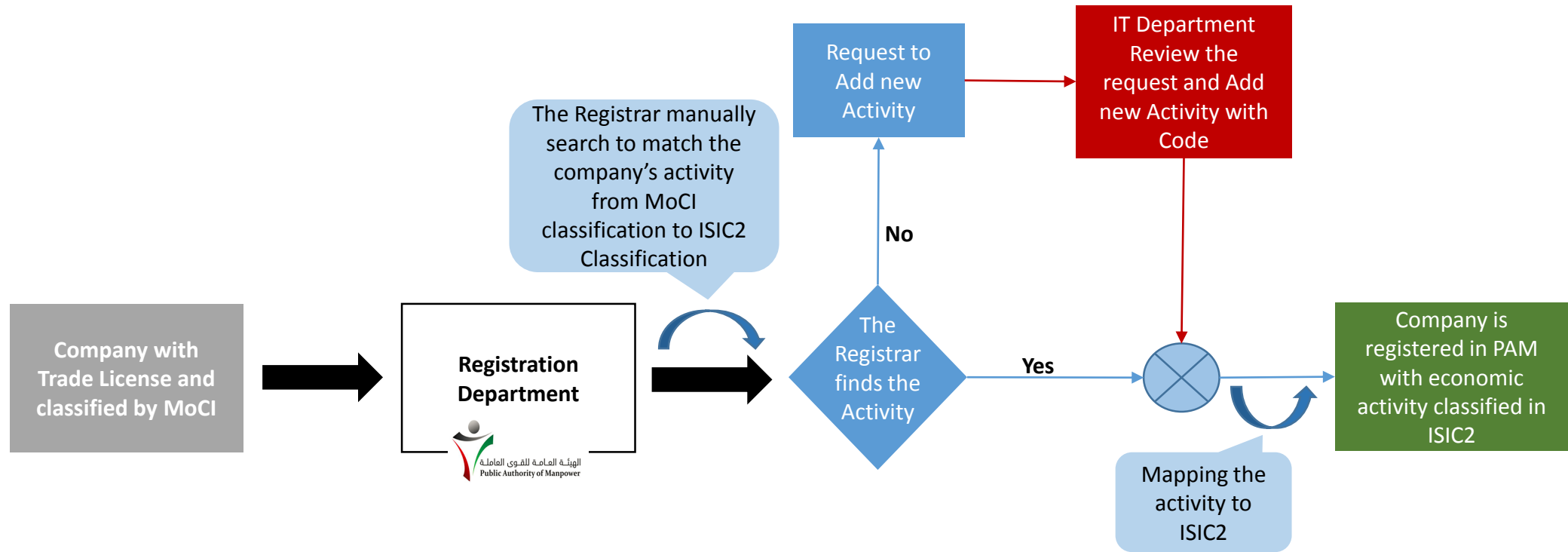
# ISIC Rev.4 Implementation Plan

Process	Detailed Procedure	Level of Implementation
<b>ISIC Rev.4 System Implementation</b>	PAM IT department will create procedures to update the values of economic activity classification field from ISIC2 to ISIC4 . PAM IT department will create procedure to insert ISIC Rev.4 Classification into the same table of current ISIC 2 classification	PAM
<b>Establishing ISIC Rev.4 Specialized Team</b>	PAM will establish a specialized team to run all the functions of validation and correction of economic activities of registered companies and updating of ISIC Rev.4 classification	PAM
<b>Testing ISIC Rev.4 Implementation</b>	PAM IT department and ISIC rev.4 specialized team will run all possible test cases to evaluate ISIC Rev.4 implementation before going live	PAM
<b>Establishing ISIC Rev.4 Stakeholders Committee</b>	PAM will contact all ISIC Rev.4 related Stakeholder ,especially MGRP & MOCI and form a committee to discuss and solve all issues related to ISIC Rev.4 adoption	Stakeholders
<b>ISIC Rev.4 Awareness Campaign</b>	PAM will establish ISIC Rev.4 awareness campaign to share and increase the knowledge about the importance to adopt ISIC Rev.4 as new economic activity classification	PAM
<b>Go Live</b>	PAM will update the Company registration e-Service with ISIC rev.4	PAM
<b>Validating and Correcting classification of Companies and Government Contracts</b>	Specialized Team will run a detailed procedures to validate and correct the economic activity of all wrongly classified companies and government contracts	PAM
<b>Resolving General Contracting and Trading companies</b>	PAM, MGRP and MOCI will join the efforts to resolve all companies registered and classified as general contracting and trading ,this will overcome the gaps in ISIC rev.4 adoption on the national level	Stakeholders
<b>Establishing National Classifications Committee</b>	PAM will submit a request to establish a national committee to own and maintain national classifications (ISIC Rev.4 , ISCO-08,HS,etc..) and create Kuwait classifications Meta Data service	National

# Current Process to register a company in reference to Economic Activities Classification

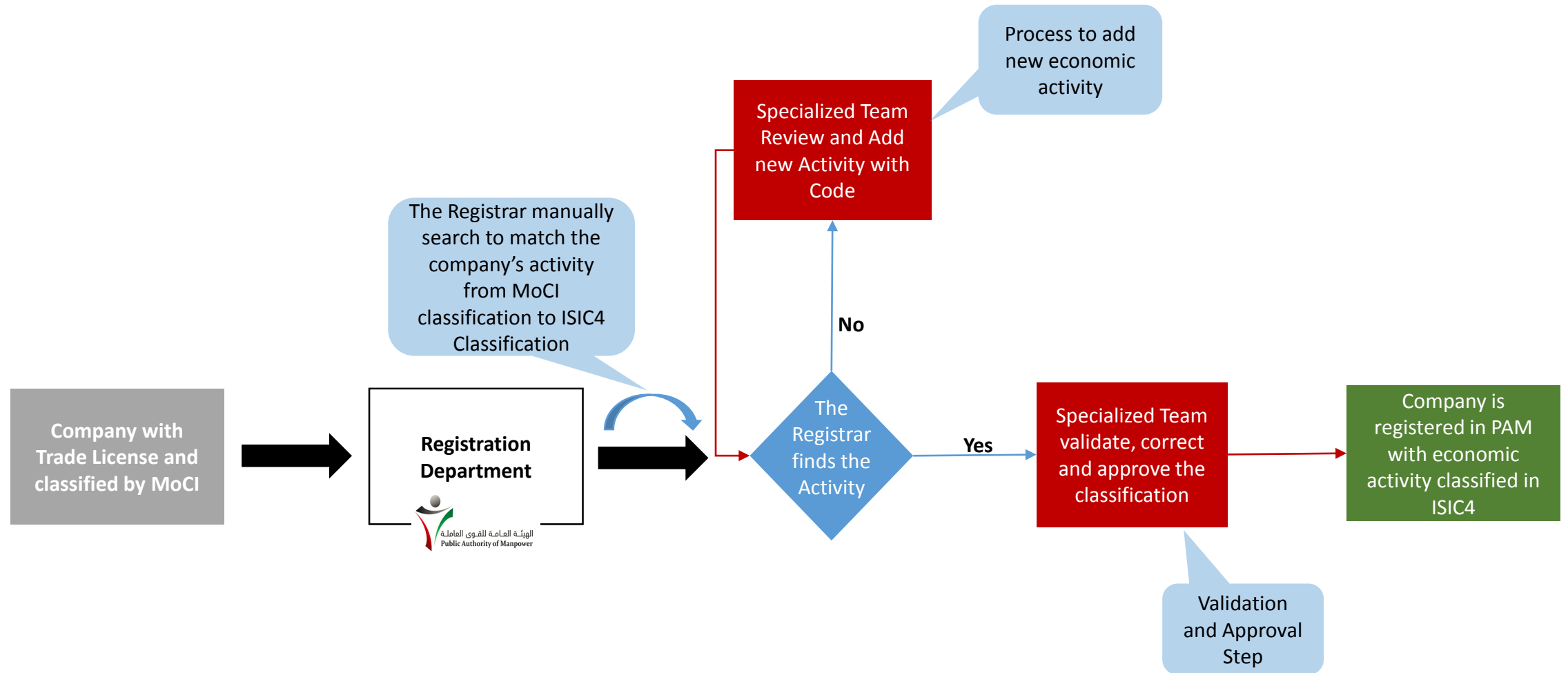
New activities were added with no compliance with ISIC Rev.2 economic structure

2



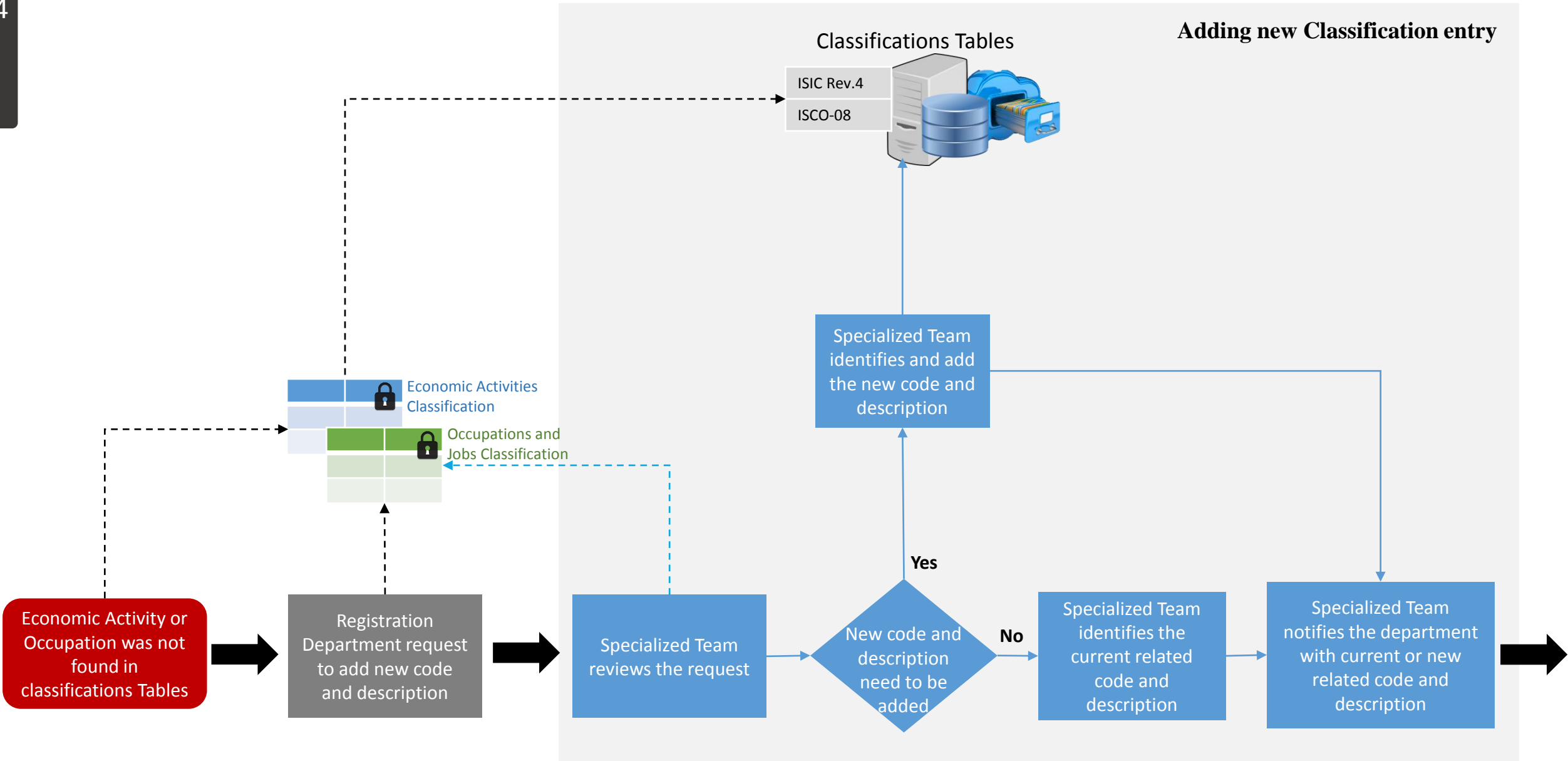
## New Process to register a company after adopting ISIC Rev.4 Classification

Specialized Team is responsible to validate, correct and approve classification of new registered companies



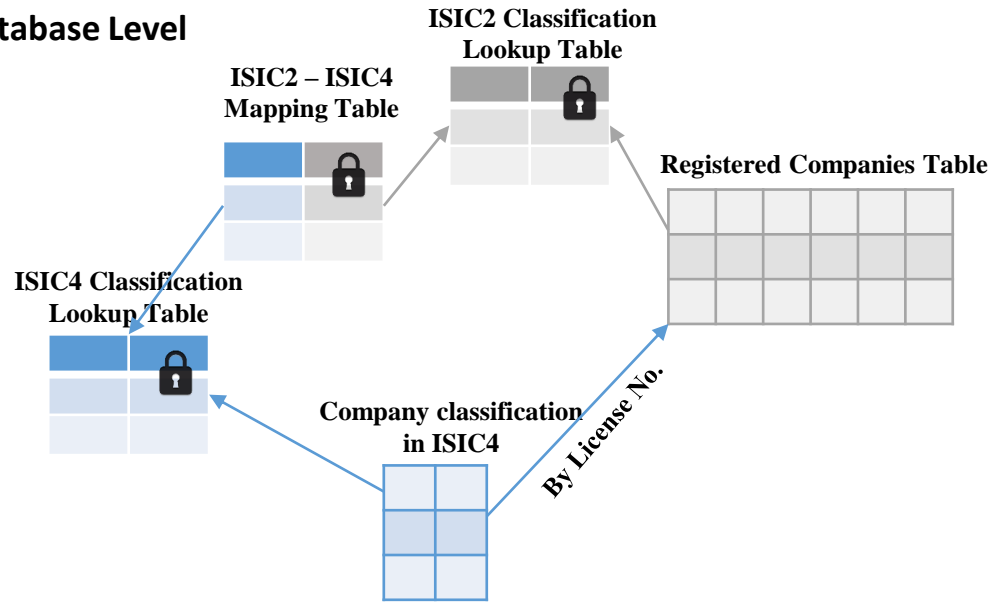
# New Process to add new Classification entry to PAM Classifications Tables

4



# Define Standard Data Structure for ISIC Rev.4 Implementation

## Database Level



## Application Level

**Company Registration Form**

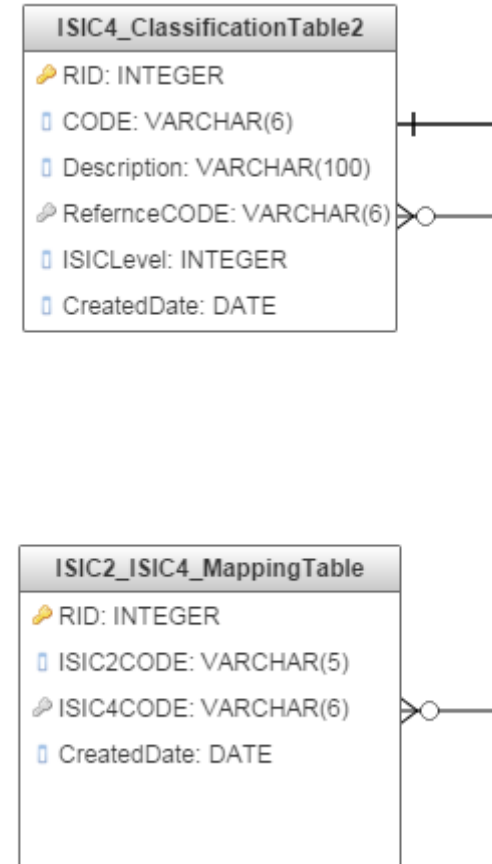
Company Name

Company License No.

ISIC2 Code & Description

Read only

## ISIC Rev.4 Table Structure





# Develop System-level Implementation Plan to adopt ISIC Rev.4 Classification

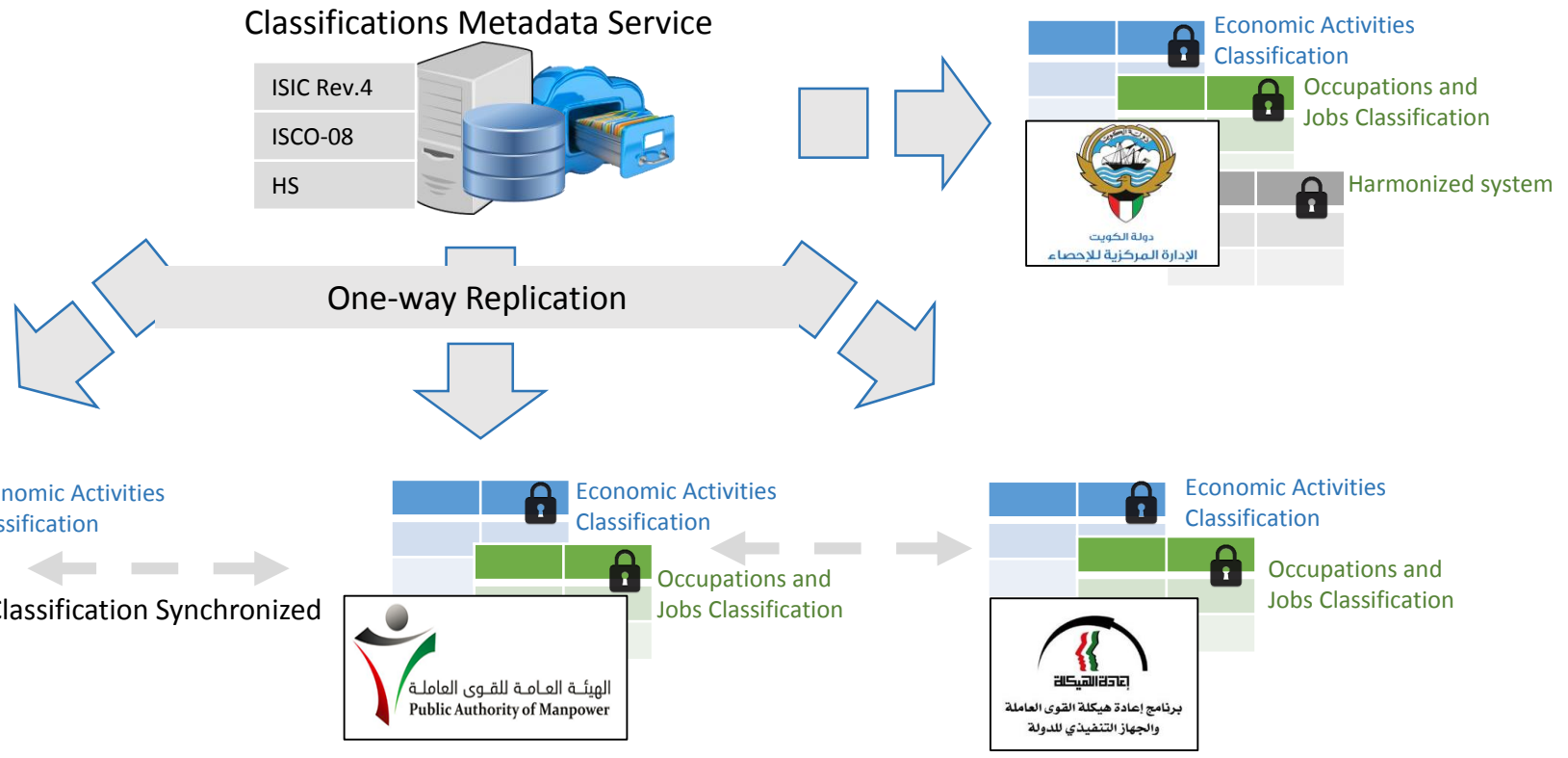
By reviewing current PAM Data and Table Structure and identify IT system limitation

6

Step	Use ISIC Rev.2 Table to maintain ISIC Rev.4 Classification	Update economic classification of Companies and Government Contracts to ISIC Rev.4	Go Live with ISIC Rev.4																																	
Detailed Procedure	Insert ISIC Rev.4 Classification Records into correct ISIC Rev.2	Update economic classification for all companies' records to ISIC Rev.4 using ISIC2- ISIC 4 mapping Table	The economic activity field in the company registration form will be directed to ISIC Rev.4 Classification Records																																	
System and Data Structure	<p style="text-align: center;">ISIC 2 Classification Table</p> <table border="1" style="margin-left: auto; margin-right: auto;"> <thead> <tr> <th>ISIC 2 Code</th> <th>ISIC 2 Description</th> </tr> </thead> <tbody> <tr><td> </td><td> </td></tr> <tr><td> </td><td> </td></tr> </tbody> </table> <p style="text-align: center;">ISIC Rev.4 Classification</p> <table border="1" style="margin-left: auto; margin-right: auto;"> <thead> <tr> <th>ISIC Rev.4 Code</th> <th>ISIC Rev.4 Description</th> </tr> </thead> <tbody> <tr><td> </td><td> </td></tr> <tr><td> </td><td> </td></tr> </tbody> </table>	ISIC 2 Code	ISIC 2 Description					ISIC Rev.4 Code	ISIC Rev.4 Description					<p style="text-align: center;">Registered Companies Table</p> <table border="1" style="margin-left: auto; margin-right: auto;"> <thead> <tr> <th>Company License No.</th> <th>Company Name</th> <th>ISIC 2 Code</th> </tr> </thead> <tbody> <tr><td> </td><td> </td><td> </td></tr> <tr><td> </td><td> </td><td> </td></tr> </tbody> </table> <table border="1" style="margin-left: auto; margin-right: auto; margin-top: 10px;"> <thead> <tr> <th>ISIC 2 Code</th> <th>ISIC Rev.4 Code</th> </tr> </thead> <tbody> <tr><td> </td><td> </td></tr> <tr><td> </td><td> </td></tr> </tbody> </table>	Company License No.	Company Name	ISIC 2 Code							ISIC 2 Code	ISIC Rev.4 Code					<p style="text-align: center;">Company Registration Form</p> <p>Company Name <input style="width: 100%;" type="text"/></p> <p>Company License No. <input style="width: 100%;" type="text"/></p> <p>Economic Activity <input style="width: 100%;" type="text"/></p> <p style="text-align: center;">Classification Table</p> <table border="1" style="margin-left: auto; margin-right: auto;"> <thead> <tr> <th>Code</th> <th>Description</th> </tr> </thead> <tbody> <tr><td> </td><td> </td></tr> <tr style="background-color: #0070C0; color: white;"><td> </td><td> </td></tr> </tbody> </table> <p style="text-align: right; margin-right: 50px;">← ISIC Rev.4 Starting Record</p>	Code	Description				
ISIC 2 Code	ISIC 2 Description																																			
ISIC Rev.4 Code	ISIC Rev.4 Description																																			
Company License No.	Company Name	ISIC 2 Code																																		
ISIC 2 Code	ISIC Rev.4 Code																																			
Code	Description																																			

# Establish Central Repository for all classifications on the national level

Metadata Service will be hosted ,controlled and maintained by the central statistical bureau

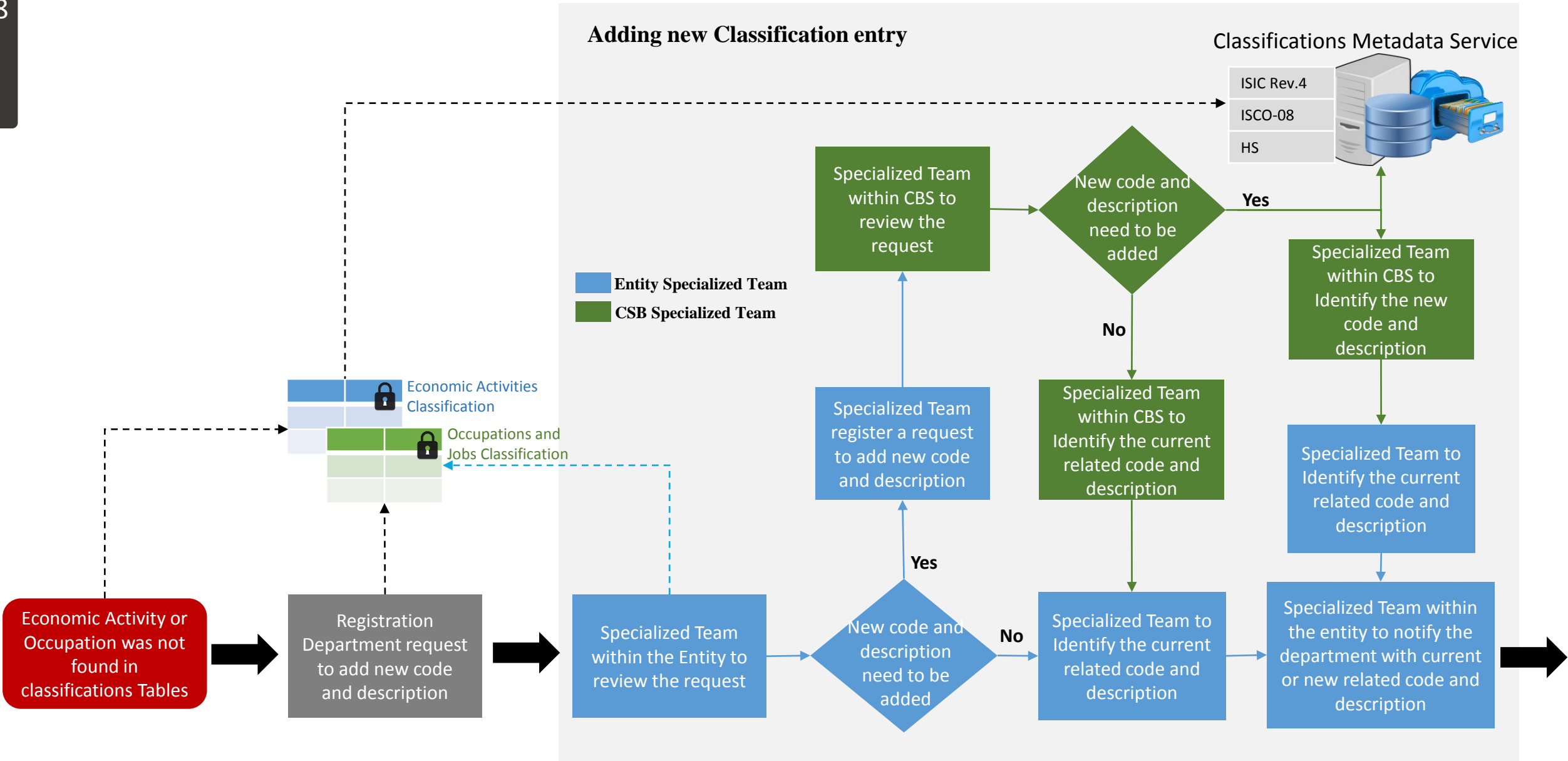


Read only

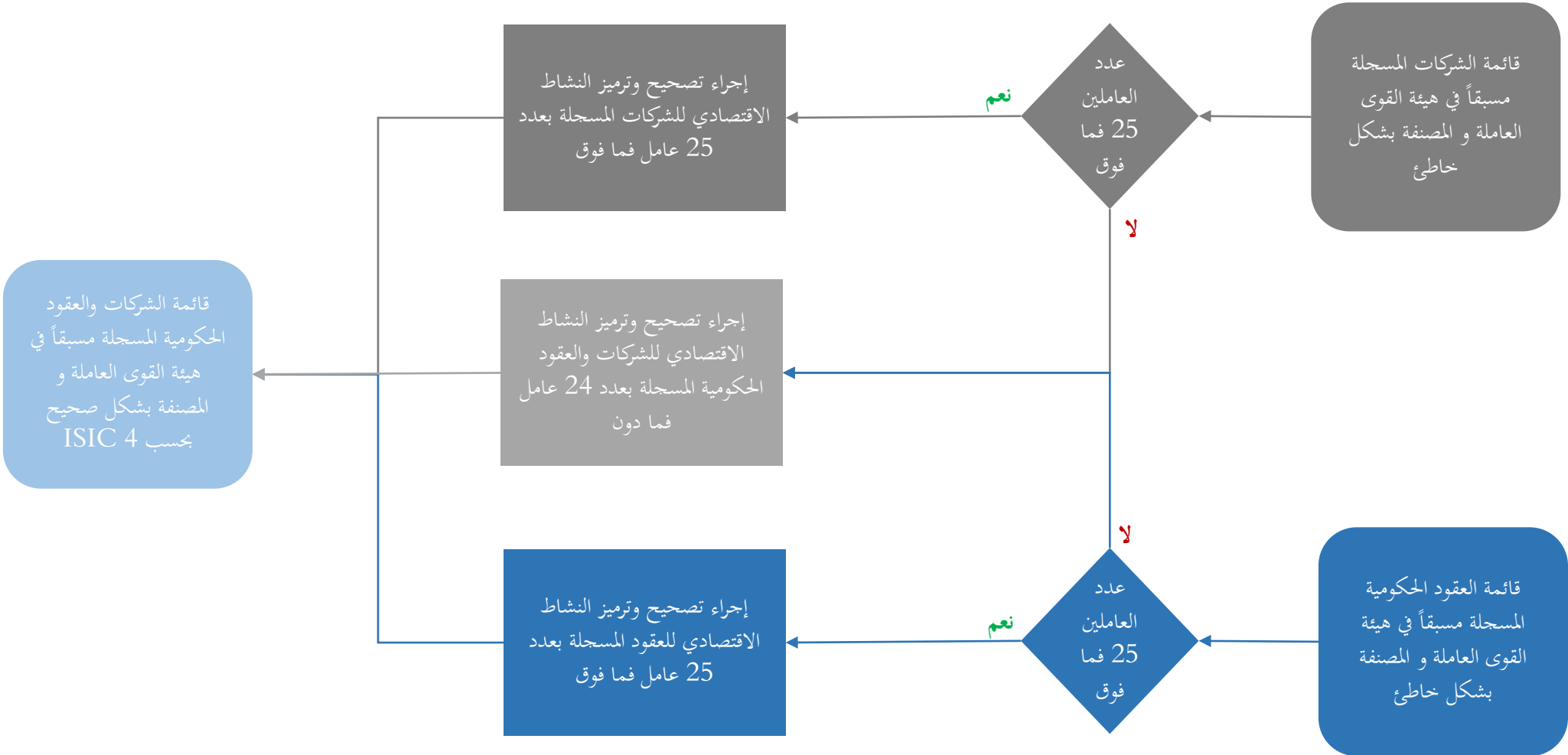
# New Process to add new Classification entry to the Classifications Central repository

CSB responsibility is maintain the integrity of classifications Metadata

8

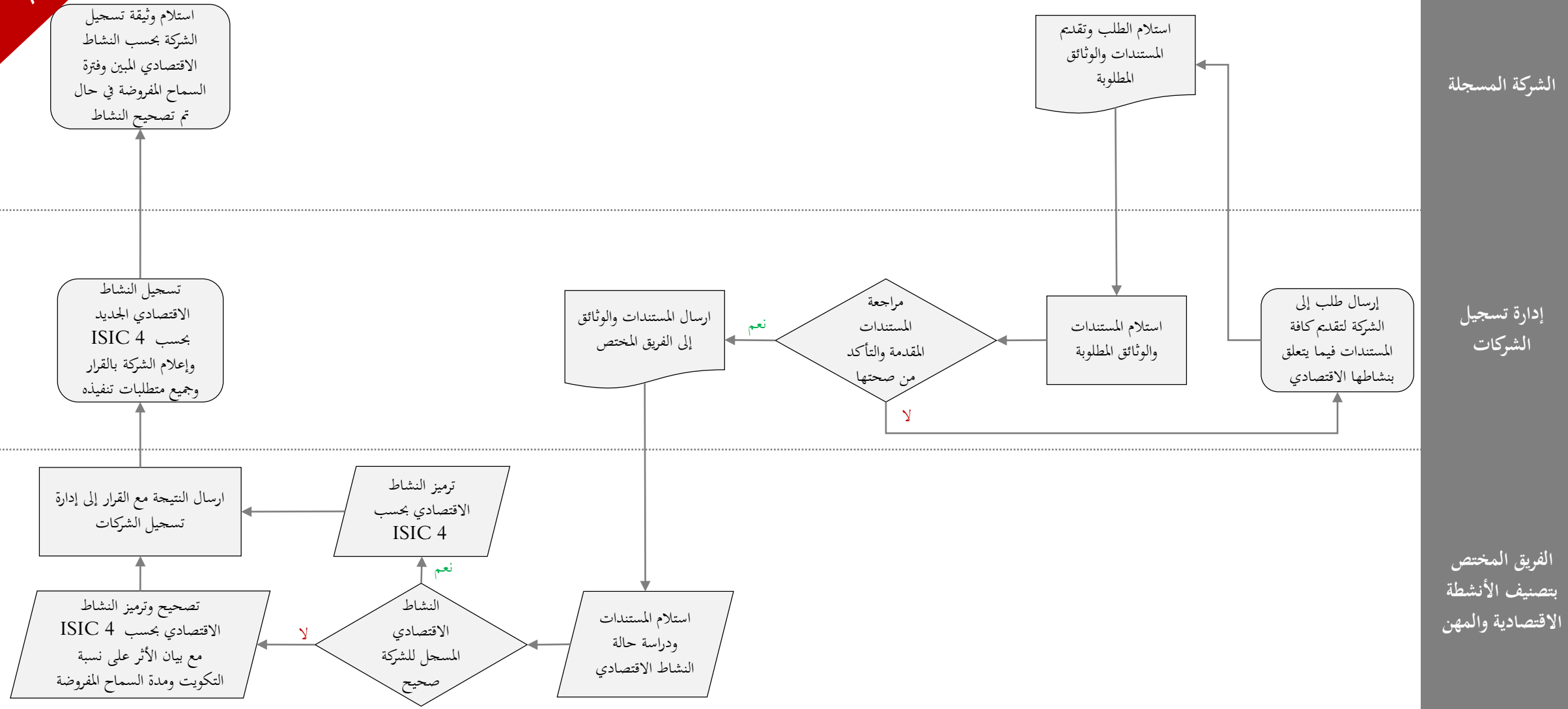


# الإجراء العام لتصحيح و ترميز النشاط الاقتصادي للشركات والعقود الحكومية المسجلة في هيئة القوى العاملة



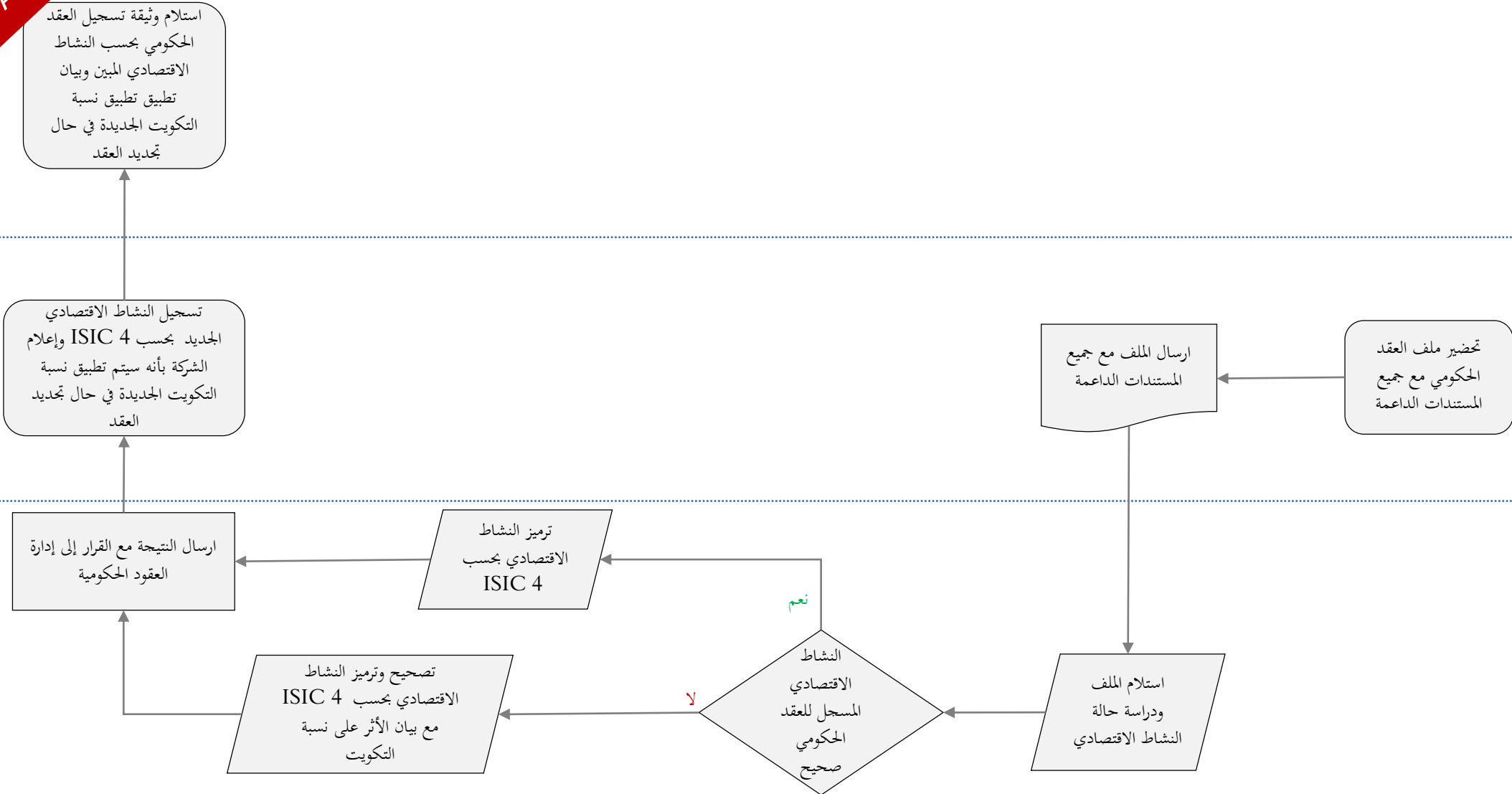
# إجراء تصحيح وترميز النشاط الاقتصادي للشركات المسجلة بعدد 25 عامل فما فوق

Appendix



# إجراء تصحيح وترميز النشاط الاقتصادي للعقود المسجلة بعدد 25 عامل فما فوق

Appendix



الشركة المالكة للعقد  
الحكومي

إدارة العقود الحكومية

الفريق المختص  
بتصنيف الأنشطة  
الاقتصادية والمهن